

## Gilbert court , W5

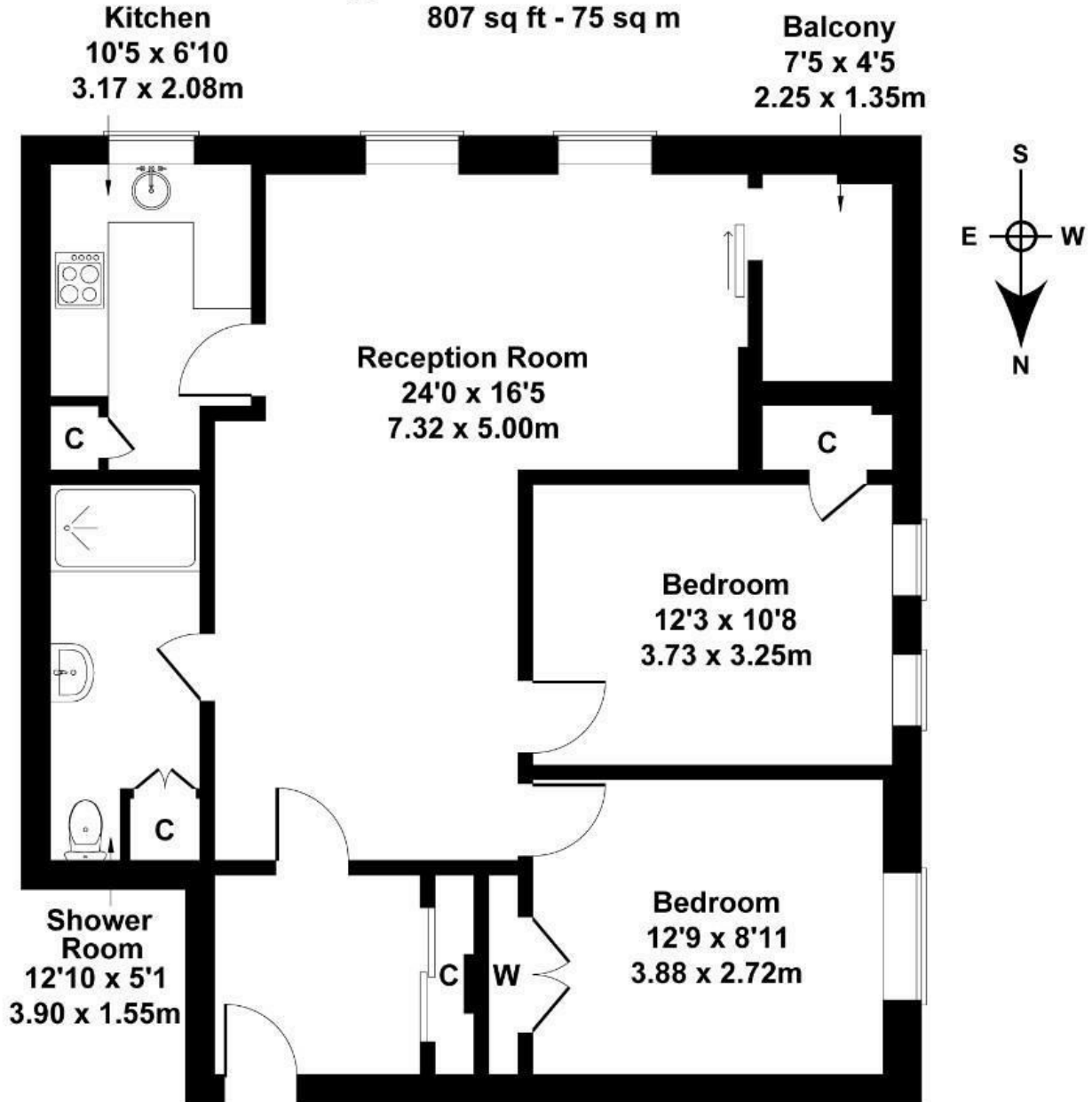
Long Let. Situated in the desirable Gilbert Court, W5, this charming two-bedroom apartment offers a perfect blend of modern living and classic appeal.

- Purpose built
- Recently refurbished to a high standard
- Private garage and permit parking
- Great transport links
- Available from 1st April 2026
- Early viewings advised

£2,500

# Gilbert Court

Approximate Gross Internal Area  
807 sq ft - 75 sq m



Not to Scale. Produced by The Plan Portal 2025  
**For Illustrative Purposes Only.**

Energy Efficiency Rating		
	Current	Potential
Very energy efficient - lower running costs		
(92 plus) <b>A</b>		
(81-91) <b>B</b>		
(69-80) <b>C</b>		
(55-68) <b>D</b>		
(39-54) <b>E</b>		
(21-38) <b>F</b>		
(1-20) <b>G</b>		
Not energy efficient - higher running costs		
<b>England &amp; Wales</b>	EU Directive 2002/91/EC	